

RESOLUTION NO. 26-14

A RESOLUTION APPROVING AND ADOPTING THE CITY ROAD WEIGHT LIMIT MAP

WHEREAS, The City Council of the City of Box Elder, South Dakota, has authority pursuant to SDCL Chapter 32-22 and other applicable state laws to regulate the operation of trucks and heavy vehicles on municipal streets; and

WHEREAS, it is necessary to designate truck routes, delivery routes, and local streets with established weight limits to protect residential neighborhoods from heavy truck traffic, preserve pavement and street infrastructure, promote traffic safety, provide efficient movement of commercial vehicles, and reduce conflict between heavy vehicles and pedestrian or school zones; and

WHEREAS, City staff has prepared a Road Weight Limit Map dated March 17, 2026, attached hereto as Exhibit A, identifying truck routes, delivery routes, and local streets with established weight limits within the City limits; and

WHEREAS, The City Council has reviewed the proposed Road Weight Limit Map and find it to be in the best interest of public health, safety, and welfare.

NOW, THEREFORE, BE IT RESOLVED by the Common Council of the City of Box Elder, as follows

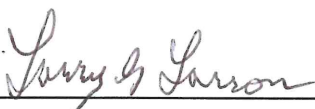
The City Council hereby approves and adopts the Road Weight Limit Map dated March 17, 2026, attached as Exhibit A, as the official Road Weight Limit Map of the City.

PASSED, APPROVED AND ADOPTED this 17th day of March, 2026

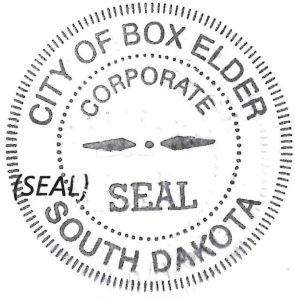
ATTEST:



Renee Baker, Finance Officer



Larry Larson, Mayor



ATTESTATION

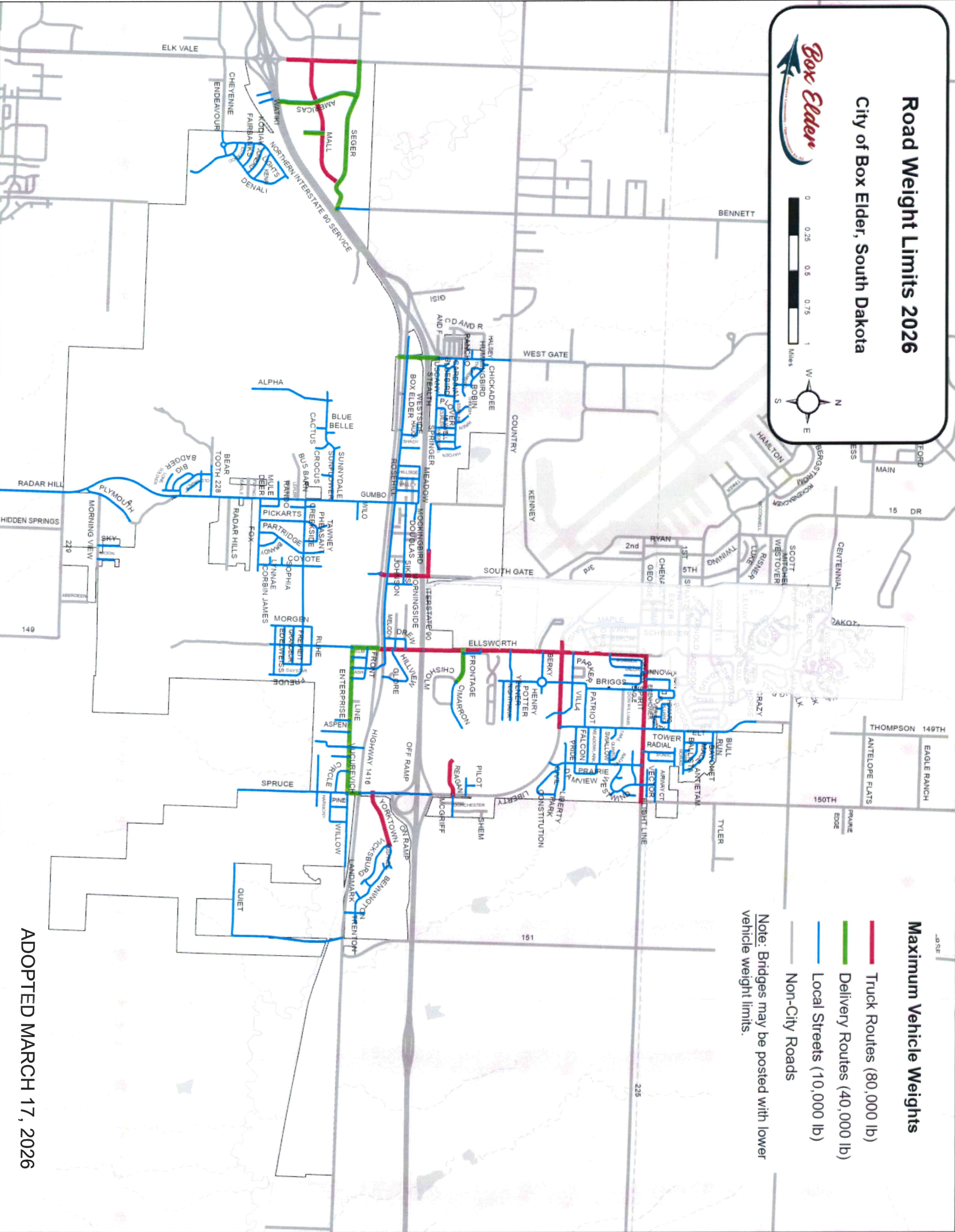
I, Chaz Kokesh, the City Clerk of the City of Box Elder, South Dakota, do hereby attest and state the above resolution was published in the manner required by law and that all procedures required by the State of South Dakota law were complied with. This resolution shall become effective on Apr. 14, 2026.

Chaz Kokesh
Chaz Kokesh, City Clerk

Resolution
No. 26-14
"Exhibit A"

Road Weight Limits 2026

City of Box Elder, South Dakota



Maximum Vehicle Weights

- Truck Routes (80,000 lb)
- Delivery Routes (40,000 lb)
- Local Streets (10,000 lb)
- Non-City Roads

Note: Bridges may be posted with lower vehicle weight limits.

ADOPTED MARCH 17, 2026