

RESOLUTION NO. 26-15

A RESOLUTION APPROVING AND ADOPTING THE MAJOR STREET PLAN

WHEREAS, The City Council of the City of Box Elder, South Dakota, has the authority pursuant to SDCL Chapter 11-6 and other applicable state laws to plan for the development of property in and around a municipality; and

WHEREAS, It is necessary to plan for major streets, including arterial and collector streets to ensure an efficient future street network; and

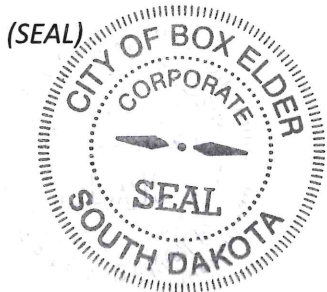
WHEREAS, The City has adopted the 2025 Master Transportation Plan on January 6, 2026; and

WHEREAS, City staff has prepared a Major Street Plan, dated March 17, 2026, attached hereto as Exhibit A, identifying existing and future arterial and collector streets within the City limits and in the Extraterritorial Planning Area; and

WHEREAS, The City Council has reviewed the proposed Major Street Plan and find it to be in the best interests of the public health, safety and welfare.

NOW, THEREFORE, BE IT RESOLVED by the Common Council of the City of Box Elder, that the City Council hereby approves and adopts the Major Street Plan dated March 17, 2026, attached as Exhibit A, as the official Major Street Plan of the City.

PASSED, APPROVED AND ADOPTED this 17th day of March, 2026.



ATTEST:

Larry Larson, Mayor

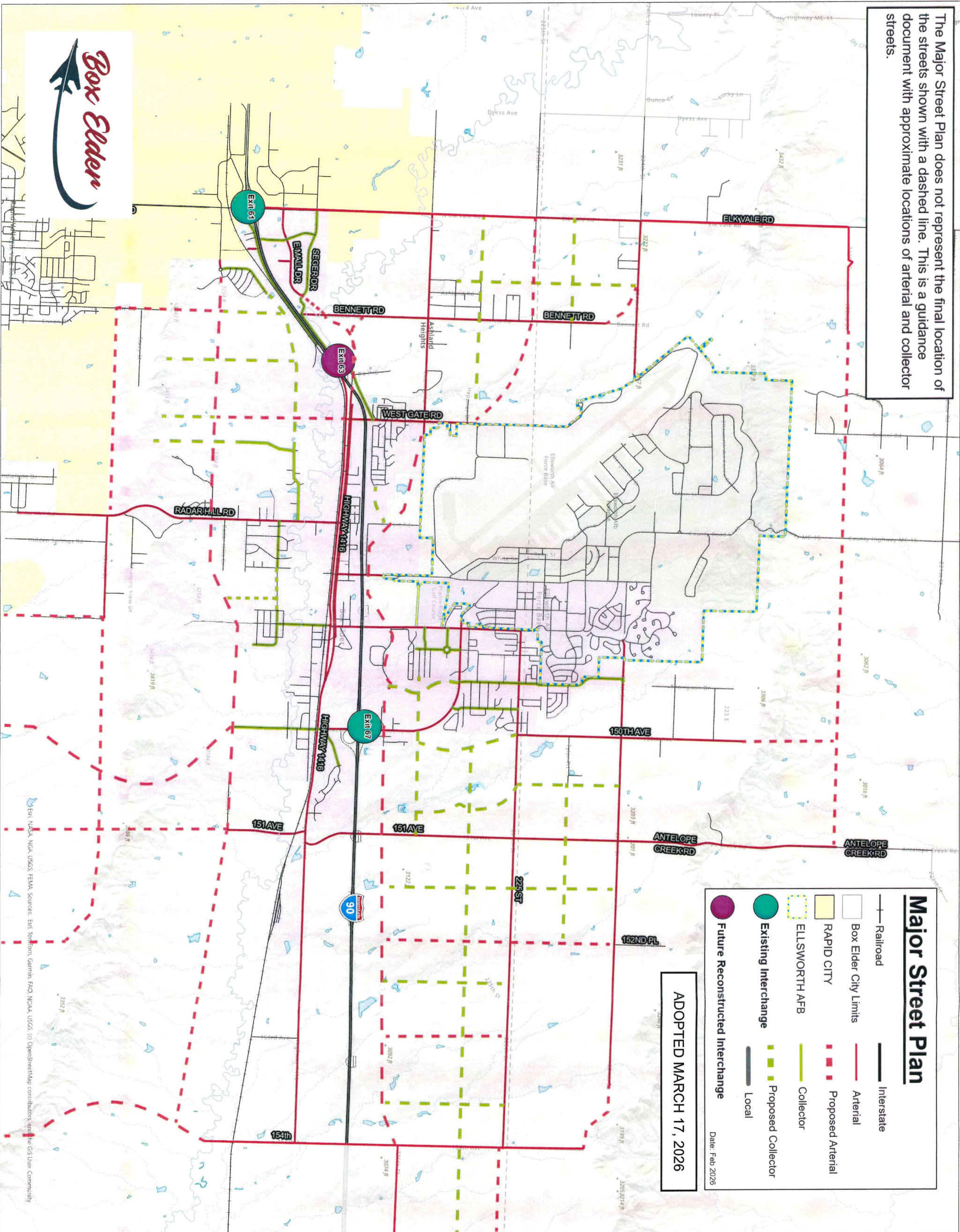
Renee Baker, Finance Officer

ATTESTATION

I, Chaz Kokesh, the City Clerk of the City of Box Elder, South Dakota, do hereby attest and state the above resolution was published in the manner required by law and that all procedures required by the State of South Dakota law were complied with. This resolution shall become effective on April 14, 2026.

Chaz Kokesh
Chaz Kokesh, City Clerk

The Major Street Plan does not represent the final location of the streets shown with a dashed line. This is a guidance document with approximate locations of arterial and collector streets.



Major Street Plan

- Railroad
- Interstate
- Arterial
- Proposed Arterial
- Collector
- Proposed Collector
- Local
- Future Reconstructed Interchange
- Existing Interchange
- ELLSWORTH AFB
- RAPID CITY
- Box Elder City Limits

ADOPTED MARCH 17, 2026

Date: Feb 2026

Resolution
NO. 26-15
"Exhibit A"

ESRI, NASA, NOAA, USGS, FEMA, Sources: Esri, Terribon, Garmin, FAO, NOAA, USGS. (c) OpenStreetMap contributors, and the GIS User Community